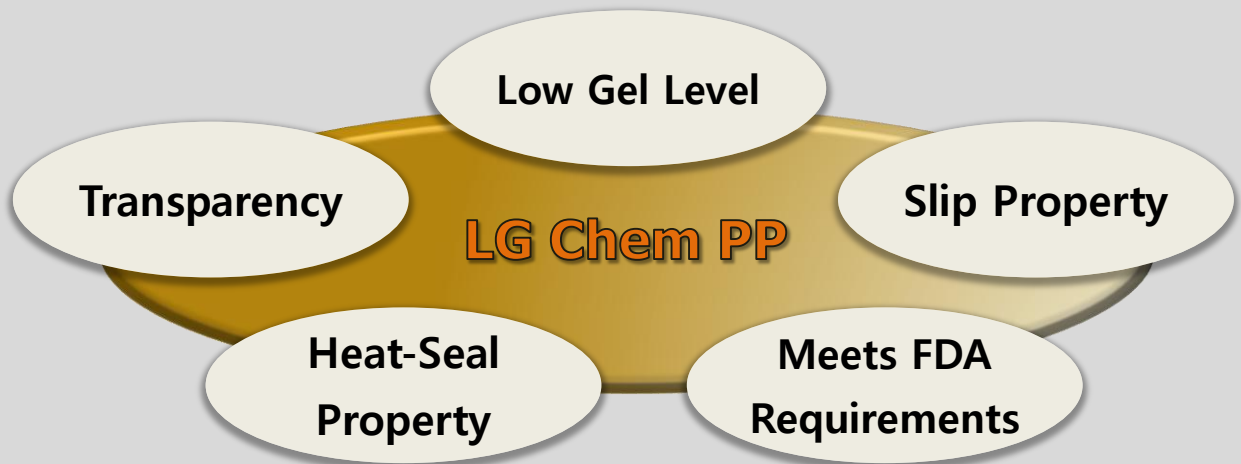
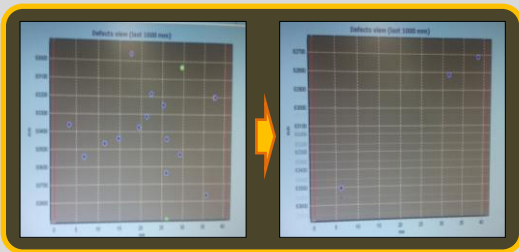


## **LG Polypropylene for Film Applications**

**A SolutionPartner**  
*Growing with Customers*  
*by Providing*  
**Innovative**  
*Materials and Solutions*

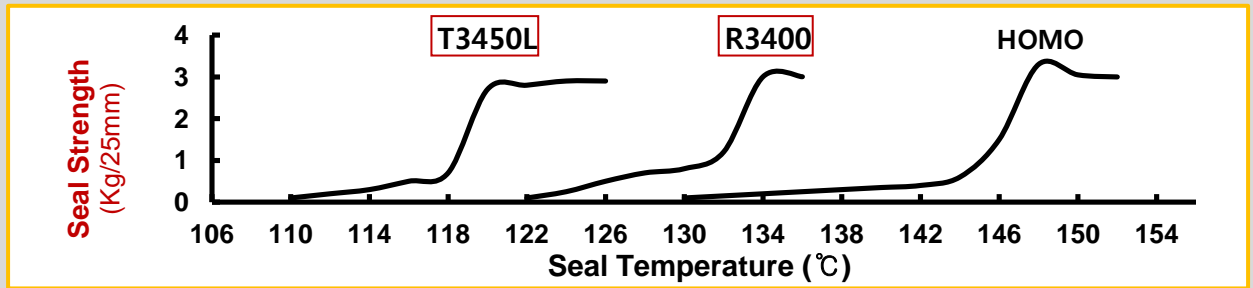
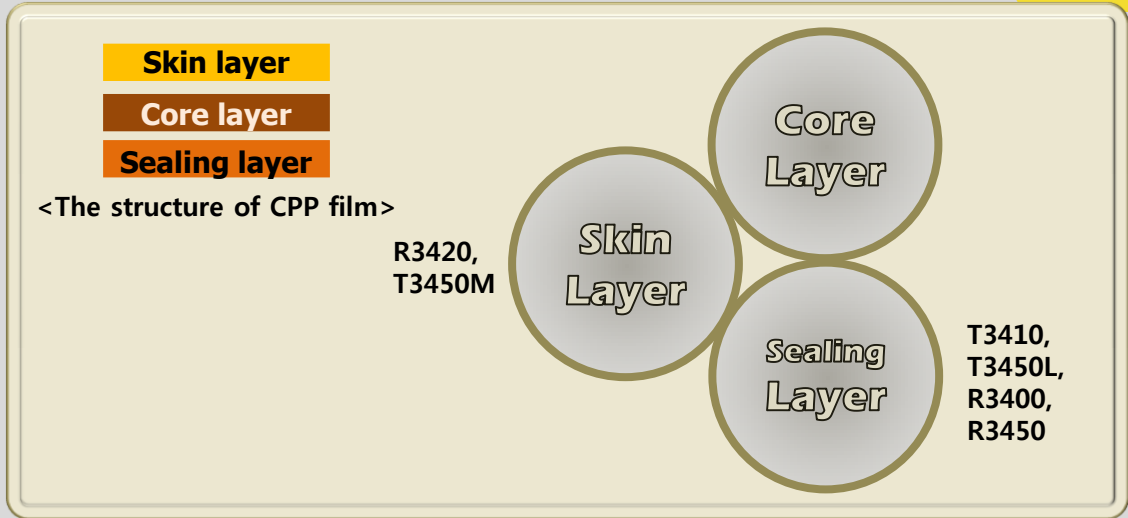


**[Characteristics of LG Polypropylene]**

- High Transparency (Optimum co-monomer balance)
- Excellent Homogeneity (On-line melt index analyzer)
- Gel Control (Automatic gel counter)
- Safety Requirement (FDA, EU directive 10/2011)

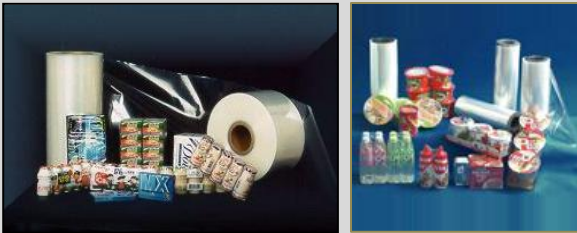


## [Applications]



## Shrinkage Film

- ▶ BOPP / Printing



## Retort Pouch

- ▶ PET / Printing / Adhesive / CPP
- ▶ PET / Printing / Adhesive / Al Foil / Adhesive / CPP



## Al metalizing

- ▶ BOPP / Printing / LDPE / Al metalized CPP or PET



## Snack Packaging

- ▶ BOPP / Printing / CPP or Heat-seal coating



Properties	Method	Unit	R3400	R3420	R3450	T3410	T3450L
Melt Index	ASTM D1238	g/10min	8.0	7.0	8.0	7.0	7.0
Density	ASTM D792	g/cm <sup>3</sup>	0.9	0.9	0.9	0.9	0.9
Melting Temperature	ASTM D3418	°C	143	144	143	133	129
Tensile Strength at Yield	ASTM D638	kg/cm <sup>2</sup>	270	280	260	230	200
Tensile Strain at Break	ASTM D638	%	> 500	> 500	> 500	> 500	> 500
Flexural Modulus	ASTM D790	kg/cm <sup>2</sup>	8,800	9,500	9,000	8,500	8,000
Izod Impact Strength (23 °C)	ASTM D256	kg-cm/cm	5.0	4.5	5.0	8.0	12.0
Rockwell Hardness	ASTM D785	R	85.0	85.0	85.0	85.0	75.0
HDT <sup>a)</sup>	ASTM D648	°C	90.0	90.0	90.0	85.0	80.0
Softening Point	ASTM D1525	°C	132.0	135.0	134.0	125.0	118.0
C.O.F <sup>b)</sup>	ASTM D1894	Static	< 1.0	-	< 0.5	< 1.0	< 1.0
Heat Seal Temperature	LG's	°C	130.0	-	130.0	122.0	117.0
Gloss	ASTM D2457	%	132.0	-	130.0	140.0	145.0
<b>CHARACTERISTIC</b>			<ul style="list-style-type: none"> <li>◆ Slip (Medium)</li> <li>◆ Anti-block (Medium)</li> </ul>	◆ Anti-block	<ul style="list-style-type: none"> <li>◆ Slip (High)</li> <li>◆ Anti-block (High)</li> </ul>	<ul style="list-style-type: none"> <li>◆ Slip</li> <li>◆ Anti-block</li> </ul>	<ul style="list-style-type: none"> <li>◆ Slip</li> <li>◆ Anti-block</li> <li>◆ Sealing</li> </ul>

a) Heat deflection temperature

b) Coefficient of friction